

Since 2004, the CASA House Sexual Assault Prevention Program for Secondary Schools (SAPPSS) has utilised a **whole-school approach** to prevention of sexual assault.

The Program requires **Principal-driven** commitment to sustaining the program and to engaging a cross-section of the school community.

Sexual Assault is **any sexual behaviour** that makes the victim/survivor feel uncomfortable, **frightened or threatened**. It is sexual activity that the victim/survivor has not given **consent** to.

*“Sexual assault is real for our community – we should all be aware of sexual assault and how to deal with it appropriately.”*

(Secondary School Teacher)

*“Everyone should do this program. You need to know this information”*

(Year 10 student)

### CASA House

Level 3, 210 Lonsdale Street,  
Melbourne VIC 3000

Administration (03) 9635 3600  
Counselling and support (03) 9635 3610  
24 hrs (free call) 1800 806 292

Email [casa@thewomens.org.au](mailto:casa@thewomens.org.au)  
Web [www.casahouse.com.au](http://www.casahouse.com.au)

CASA House is a department of the Royal Women's Hospital. It is a government funded organisation that provides services on a 24 hour basis. CASA House is committed to ensuring that the silence which surrounds sexual assault continues to be broken and that victim/survivors are provided with the necessary support.

CASA House's services include:

- Crisis care for recent assault
- Counselling, support and advocacy
- Support groups
- Support for families and friends
- Professional consultation
- Education and training
- Research and public advocacy
- School-based prevention programs

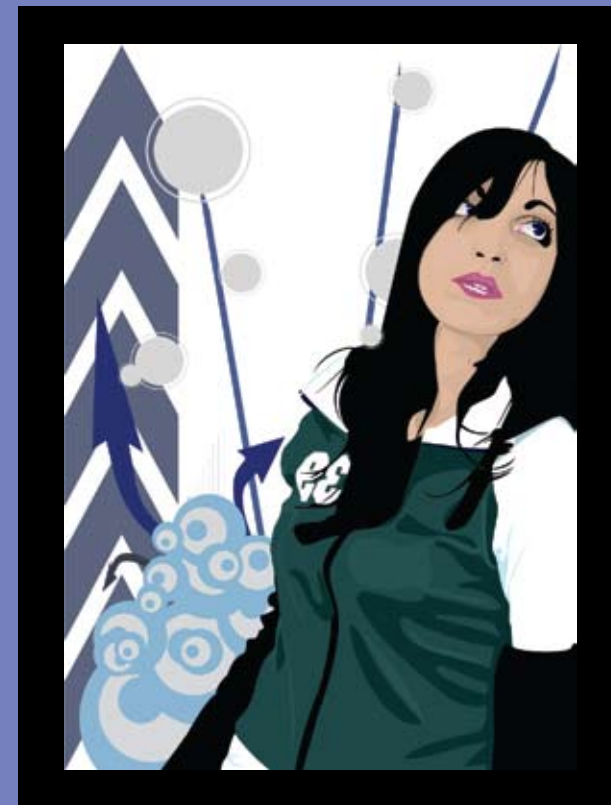
These services are available in the areas of Moreland, Hume, Melbourne, Yarra and Moonee Valley and to patients of the Royal Women's Hospital.

Please contact us for information about sexual assault services and programs in your local area.

SAPPSS model developed by:  
CASA House, the Royal Women's Hospital, Melbourne

# SAPPSS

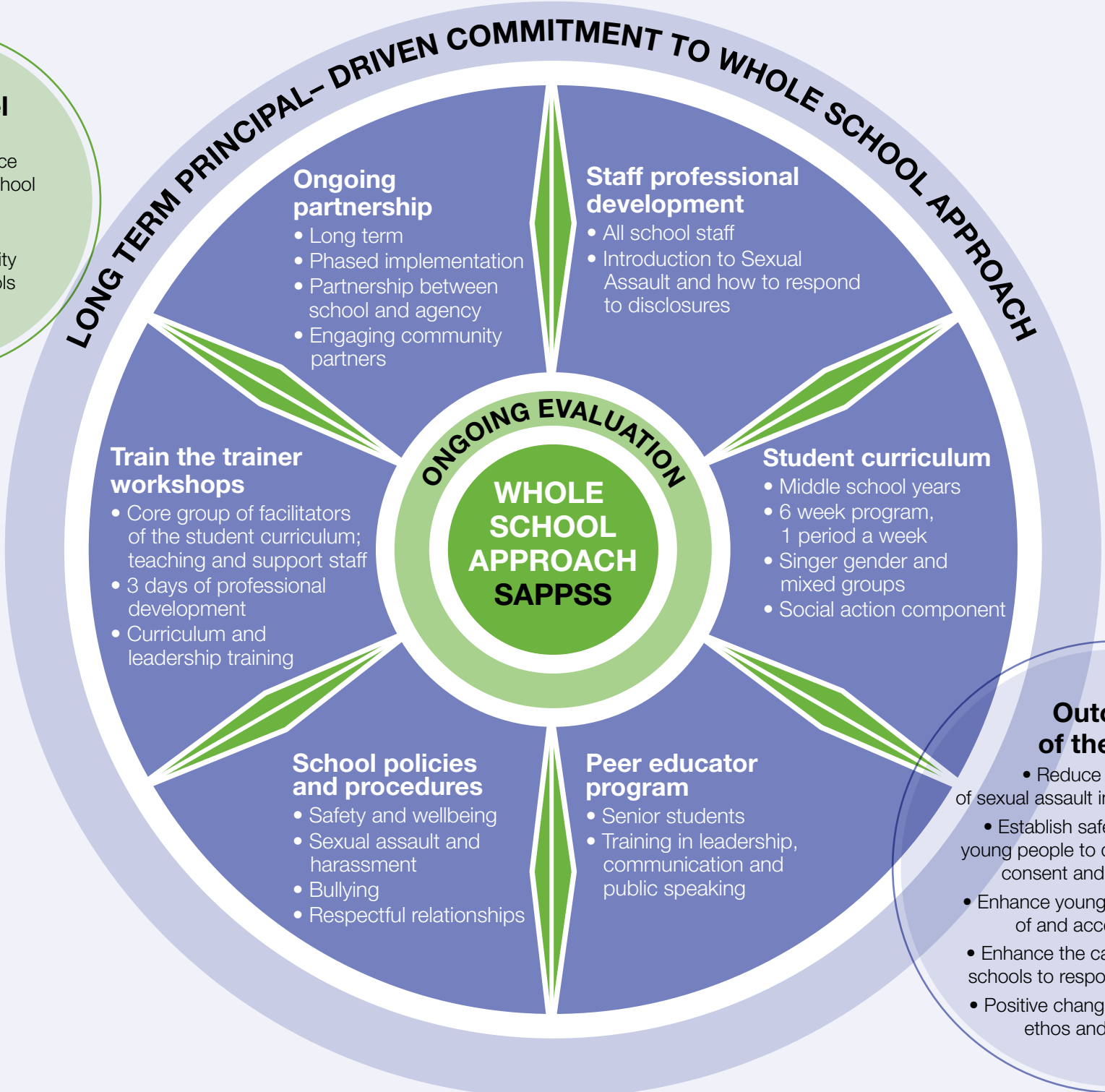
Sexual Assault Prevention  
Program for Secondary Schools



**Objectives of the model**

**Prevent:**  
Reduce the incidence of sexual assault in school communities

**Respond:**  
Enhance the capacity of secondary schools to respond to sexual assault



**Outcomes of the model**

- Reduce the incidence of sexual assault in school communities
  - Establish safe environments for young people to discuss relationships, consent and communication
- Enhance young people's knowledge of and access to support
- Enhance the capacity of secondary schools to respond to sexual assault
- Positive changes in school culture, ethos and environment